

# Co-Producing climate change information for policy and administration in the project ReKliEs-De



**ReKliEs-De**  
Regionale Klimaprojektionen Ensemble für Deutschland

Heike Huebener<sup>1\*</sup>, Achim Daschkeit<sup>2</sup>, Carsten Linke<sup>3</sup>

<sup>1</sup>Hessisches Landesamt für Naturschutz, Umwelt und Geologie, Wiesbaden, Germany

<sup>2</sup>Umweltbundesamt, Dessau, Germany

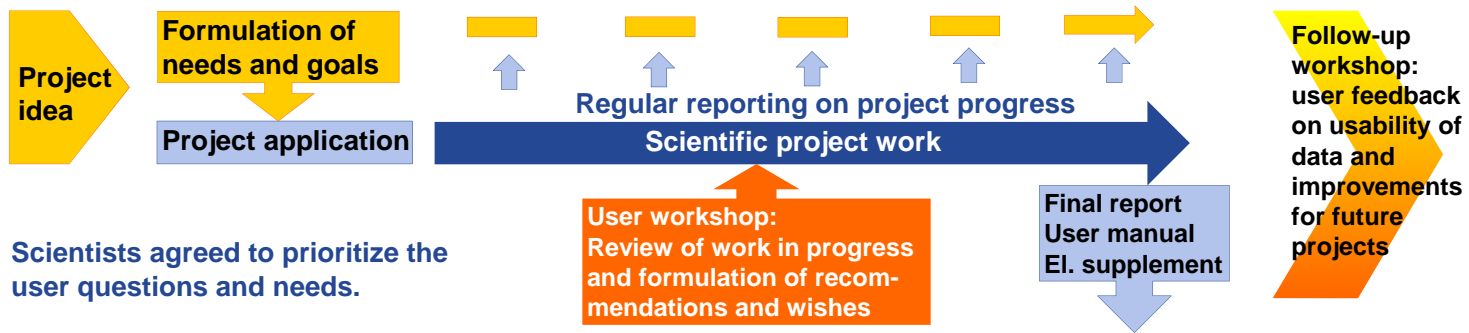
<sup>3</sup>Landesamt für Umwelt Brandenburg, Potsdam, Germany

\*heike.huebener@hlnug.hessen.de

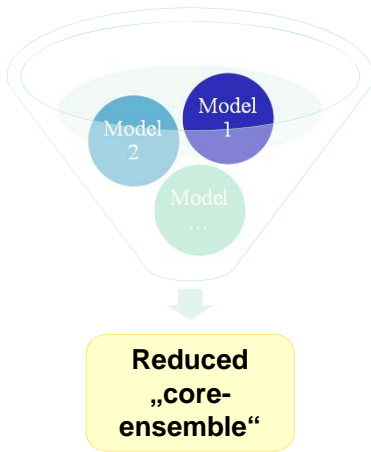
The German project ReKliEs-De (Regional Climate Change Projections Ensemble for Germany) was initiated and monitored by two working groups of federal state environmental agencies staff (yellow boxes). The project goal was to support the policy advisory at the regional level.

A mid-term workshop allowed interested users (orange boxes) to interact with the project and to influence the work and the dissemination planning. This resulted in a condensed final report, a user manual with interpretation support and a large electronic supplement.

With the project end, the users are now responsible for further disseminating the results and incorporating them into decision making. A follow-up user feedback workshop is planned for lessons learned.



## Co-produced project results



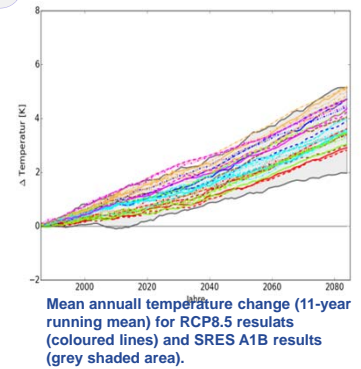
One goal of the project was to assess the number of simulations necessary to obtain stable results (i.e. results change only marginally when one more simulation is added).



A few additional parameters (i.e. growing season length, heating degree days) were analyzed in response to user wishes formulated at the user workshop.

**User manual: One chapter dedicated to assessing and explaining the performance of the contributing models.**

The users requested basic information on the performance (bias, representation of blockings, NAO, storm track position ...) of the models in the ensemble (GCMs, RCMs, ESDs).



Comparison to results from earlier projects (i.e. ENSEMBLES) was carried out, despite „comparing apples with oranges“ problem.

Further information and results of project ReKliEs-De: <http://reklies.hlnug.de>