



ReKliEs-De

Regionale Klimaprojektionen Ensemble für Deutschland



Für eine lebenswerte Zukunft



funded by:



Bundesministerium für Bildung und Forschung



Brandenburgische Technische Universität Cottbus - Senftenberg

Deutscher Wetterdienst
Wetter und Klima aus einer Hand



P I K

POTSDAM-INSTITUT FÜR KLIMAFOLGENFORSCHUNG



DKRZ

DEUTSCHES KLIMARECHENZENTRUM

Helmholtz-Zentrum Geesthacht
Zentrum für Material- und Küstenforschung

GERICS
Climate Service Center
Germany

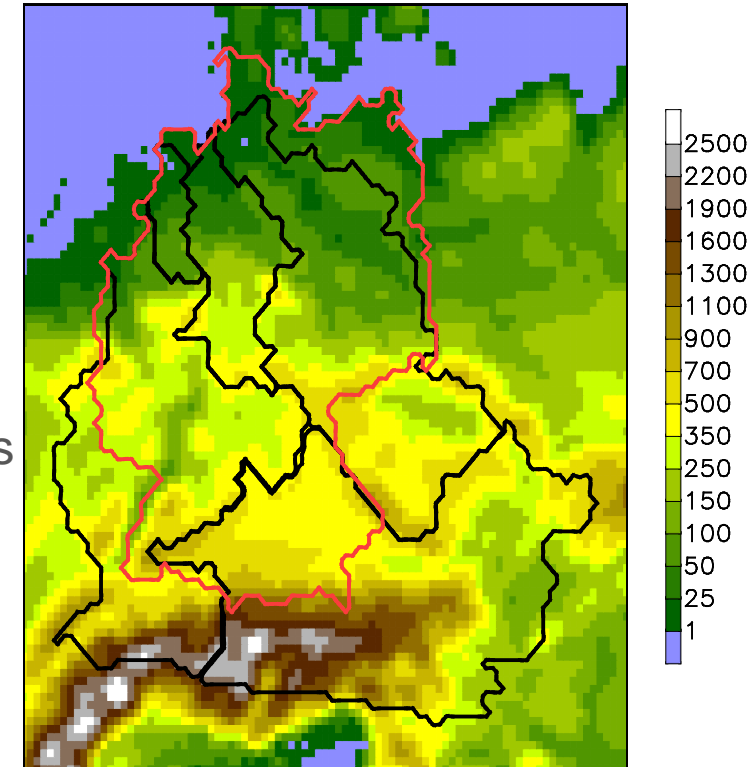




ReKliEs-De

Regionale Klimaprojektionen Ensemble für Deutschland

- Within a cooperation between federal administrations of Germany, different modeling centers, weather and climate services, ReKliEs-De will provide consistent and user-tailored information for the federal agencies and climate impact and adaptation research.
- The assessment of the data and information needs of users forms the basis of the user tailoring of the project results.
- The overall goal of ReKliEs-De is to derive robust climate change information on high spatial resolution (0.11°) for Germany and the large river catchments draining into Germany.



EURO CORDEX 0.11 ° Simulations:

- Klimafolgen-Online
- ReKliEs-De
- EURO CORDEX

RCM + RCP	CCLM	REMO	WRF	WR'10	STARS	RCA4	RACMO	HIRHAM5	Aladin
EC-EARTH RCP2.6						EURO CORDEX			
MPI-ESM-LR RCP2.6		EURO CORDEX							
MPI-ESM-LR RCP8.5	EURO CORDEX	EURO CORDEX	EURO CORDEX			EURO CORDEX			
CNRM-CM5 RCP8.5	EURO CORDEX					EURO CORDEX			EURO CORDEX
HADGEM2-ES RCP8.5	EURO CORDEX					EURO CORDEX	EURO CORDEX		
EC-EARTH RCP8.5	EURO CORDEX					EURO CORDEX	EURO CORDEX	EURO CORDEX	
Can-ESM RCP8.5									
MIROC5 RCP8.5									
IPSL-INERIS RCP8.5			EURO CORDEX			EURO CORDEX			

■ Overview of ReKliEs-De

- The EURO-CORDEX simulations are evaluated for Germany and will be systematically complemented by further simulations with both dynamical and statistical downscaling methods.
 - Optimized number of ensemble members to derive robust climate change information.
 - Analyse systematic differences between the dynamical and the statistical downscaling results.
 - Evaluate the need to reassess associated risks and impacts based on the previous climate change scenarios (SRES).
 - Climate indices will be calculated. The climate indices ETCCDI will be complemented by climate indices, which are important for Germany.
 - We are in contact with similar projects ClipC and IS-ENES2.
- All ReKliEs-De simulations and indices will be made available through ESGF.
- Model simulations on high spatial resolution, simulation of intensive precipitation periods (1 km)